



KUMO WAVE MATTER



Control by Virtual
Assistants

Wi-Fi
technology

MATTER
Protocol

KUMO WAVE MATTER

Kumo Wave is a smart hub for controlling motors and automation systems using remote controls or the Eurotronic app. It allows you to manage motors through virtual assistants such as Alexa, Google Home, Siri, and other home automation ecosystems. Furthermore, thanks to its compatibility with Matter, Kumo Wave integrates easily into smart home networks, facilitating a connected, secure, and hassle-free experience. Compatible with both one-way and two-way system motors, it offers a centralized solution for the efficient management of motorized devices, providing smart, flexible, and modern control of the home environment.

REFERENCE



KUMO WAVE MATTER | BD.200.001

COMPATIBLE WITH



- "Alexa"



- "OK Google"



- "Siri"



MATTER

TECHNICAL CHARACTERISTICS

Name	Feeding	Wi-Fi frequency	Radio frequency	Consumo stand-by	Measures
KUMO WAVE MATTER	100-240V	2,4 Ghz	433.92 Mhz	<0.3 W	75 x 75 mm

FUNCTIONS WITHIN THE APP



- **Add a Kumo device:** Place a Kumo device anywhere in your home to control your installed EUROTRONIC motors.



- **Create a room:** Set up a room so you can control all the motors in that area at the same time, making it easier to manage them together.



- **Add a motor to the Kumo device:** Link a motor to the Kumo device and, if desired, assign it to a specific room to create motor groups. This will allow you to easily manage multiple areas or motors.



- **Create a scene:** Set up a scene to establish a favorite position for each connected device. For example, you can create a scene called "CINEMA," in which all the blinds in a room close and the projector screen automatically unfolds, eliminating the need to adjust each motor individually.

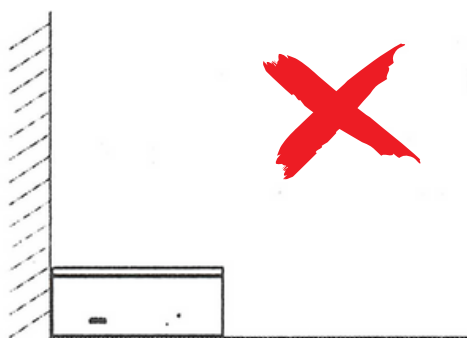


- **Add time control:** Schedule schedules to activate motors, multiple motors grouped together in a room, or even start or stop scenes. This allows you to automate the operation of motors or scenes at specific times of the day.

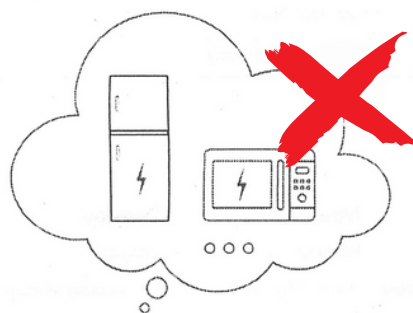


- **Connect it to your home automation network (MATTER):** With Kumo, you can easily integrate the control of your EUROTRONIC motors into your home automation system thanks to its compatibility with Matter. This allows you to manage your rooms, scenes, and schedules from a single ecosystem, centralizing control of your smart home in a practical and efficient way.

SAFETY WARNINGS

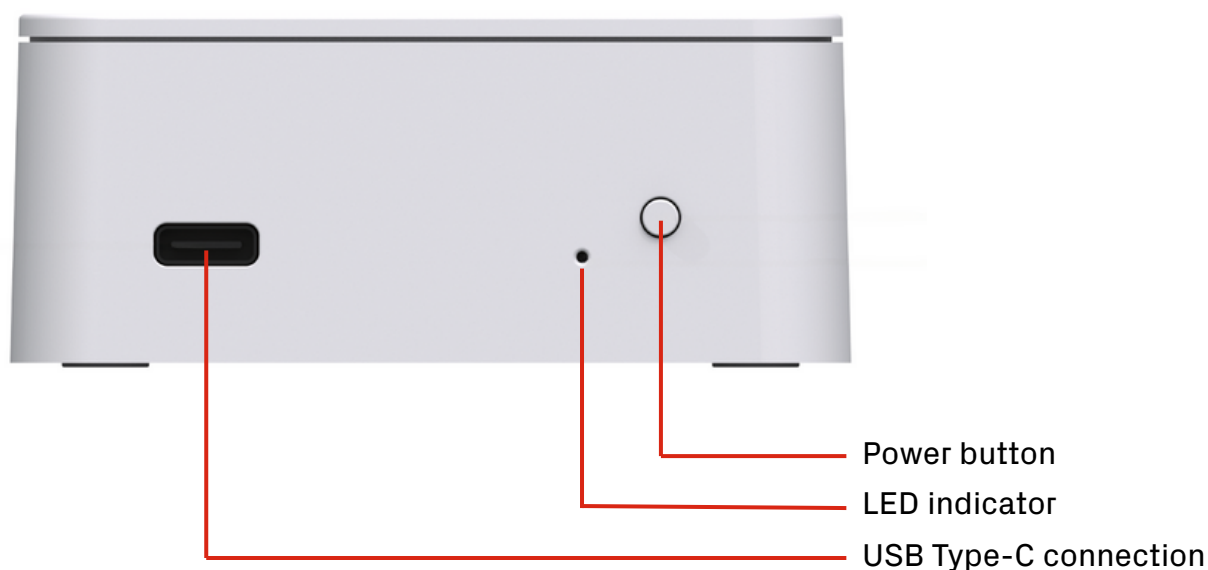


Place in a clear location where it is not limited by walls or corners.



Keep away from electrical and electronic devices

INDICATOR LIGHT SCHEME AND COLORS



COLOR	MEANING	DURATION
● Solid Blue	Working properly	Constant
● Slow Blinking Yellow	Connecting to server	Continuous until state changes
● Solid Yellow	Network connected	Constant
● Slow Blinking Red	Network disconnected	Continuous until state changes
● Fast Blinking Red	Hub rebooting	5 times
● Slow Blinking Purple	Pairing in progress	Continuous until state changes
● Slow Blinking Green	Updating in progress	Continuous until state changes

INSTRUCTIONS:

DOWNLOAD AND INSTALL THE SHADETOOL APP OR THE SHADEMATE APP ON YOUR DEVICE.

SHADETOOL



android

[Click here to download SHADETOOL from the App Store](#)

[Click here to download SHADETOOL from Google Play](#)

SHADEMATE



android

[Click here to download SHADEMATE from the App Store](#)

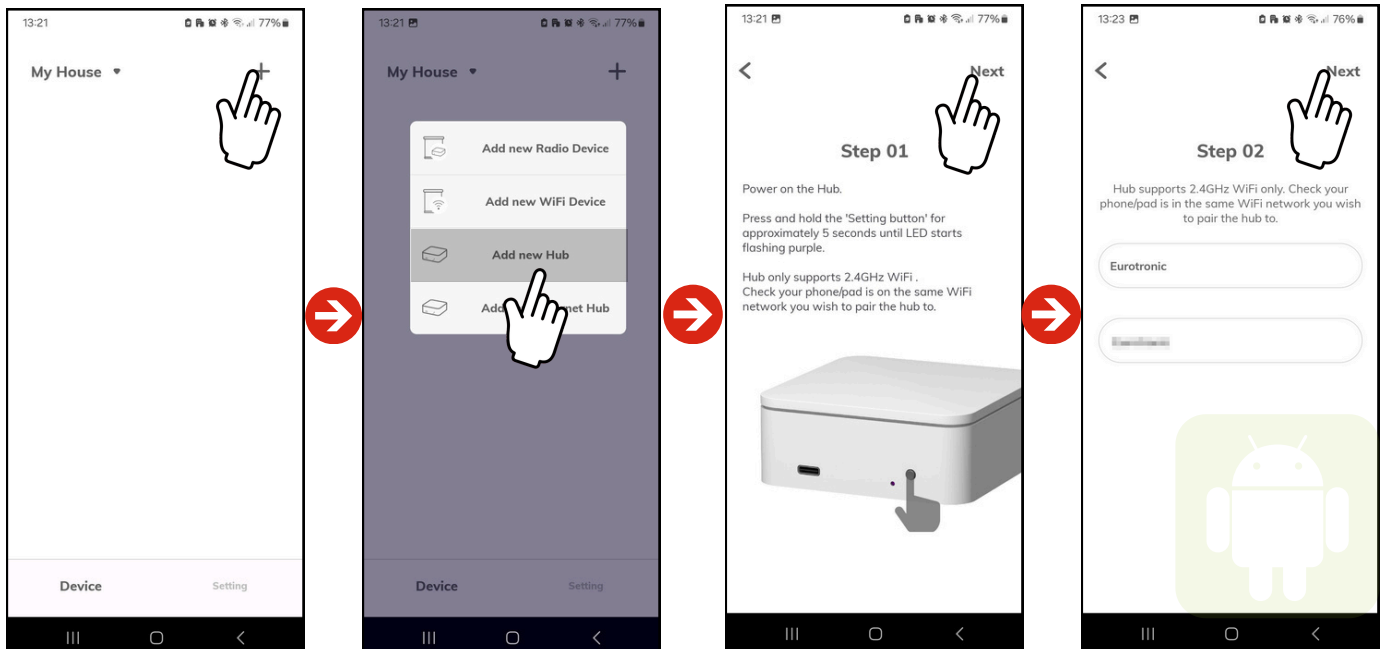
[Click here to download SHADEMATE from Google Play](#)

Función	Configuración con Shademate	Configuración con Shadetool
Account Registration and Access	✓	✗
Basic awning control	✓	✓
Adjusting the awning limits	✓	✓
Controlling the awning outside the home	✓	✗
Creating and using scenes/automations	✓	✗
Compartición mediante Matter Fabric	✓	✓
Cloud integrations (Alexa, Google Home...)	✓	✗

Prerequisites:

1. Make sure the 2.4GHz Wi-Fi network is turned on.
2. Confirm that your Wi-Fi network password is no longer than 30 characters.
3. Verify that the network's IPv6 protocol is enabled.
4. Make sure your network's mDNS service is enabled.
5. Confirms that the network allows UDP multicast to function correctly.

1. CONNECT A NEW HUB

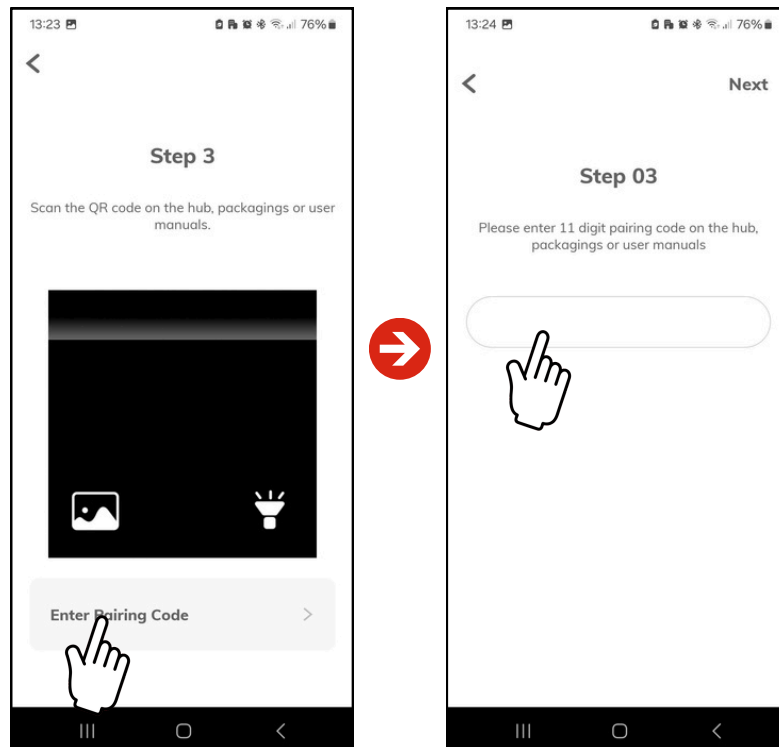


Only on Android

Procedure:

1. Tap the '+' icon in the top right corner
2. Select "Add New Hub" and press and hold the Hub configuration button for 5 seconds
3. While in pairing mode, the Hub LED will flash purple continuously.
4. (Android only) Enter the name of the Wi-Fi network and its corresponding password.

2.SCAN THE KUMO MATTER QR CODE



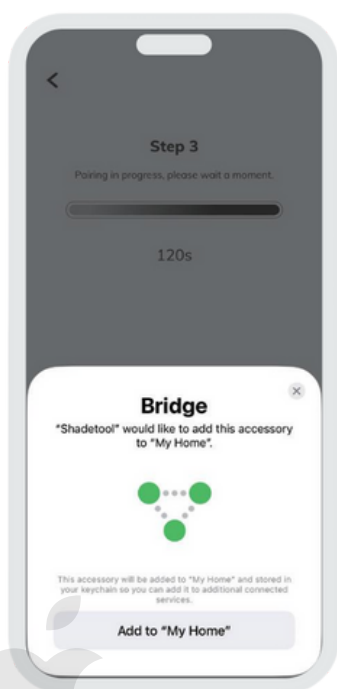
Procedure:

- Scan the Hub's QR code or enter the setup code to begin pairing. You can find the QR code or setup code on the Hub's bottom cover, in the manual, or on the packaging.

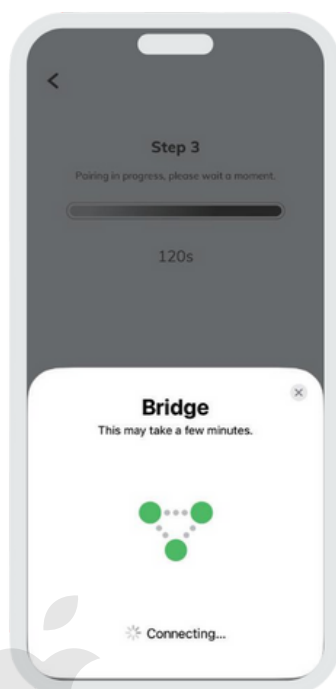


Once scanned, follow the on-screen instructions to complete the setup.

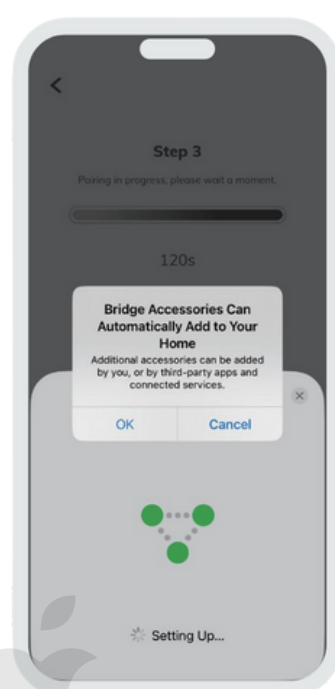
ADD THE HUB TO MATTER ACCESSORIES ON THIS IPHONE/IPAD.



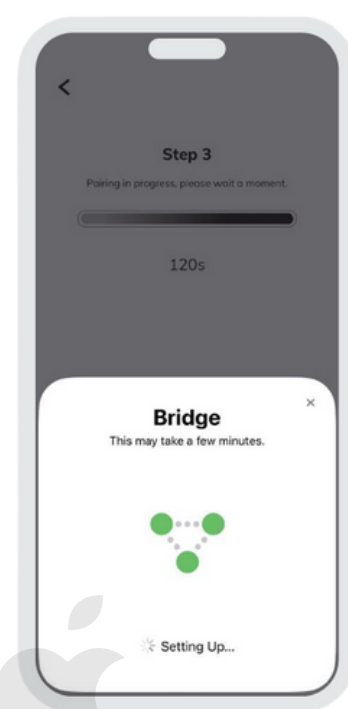
Only on iOS



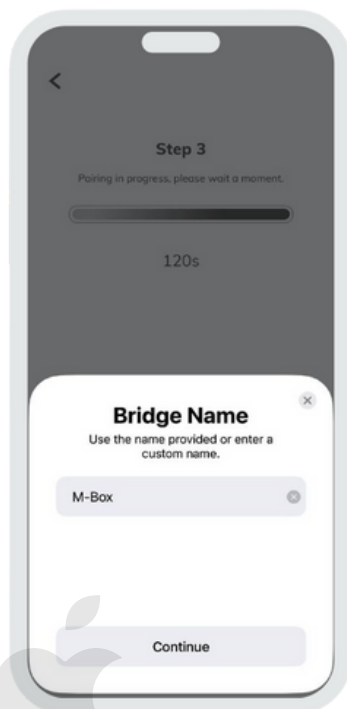
Only on iOS



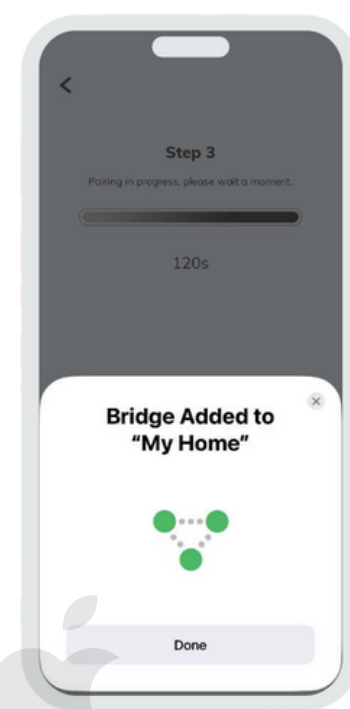
Only on iOS



Only on iOS



Only on iOS

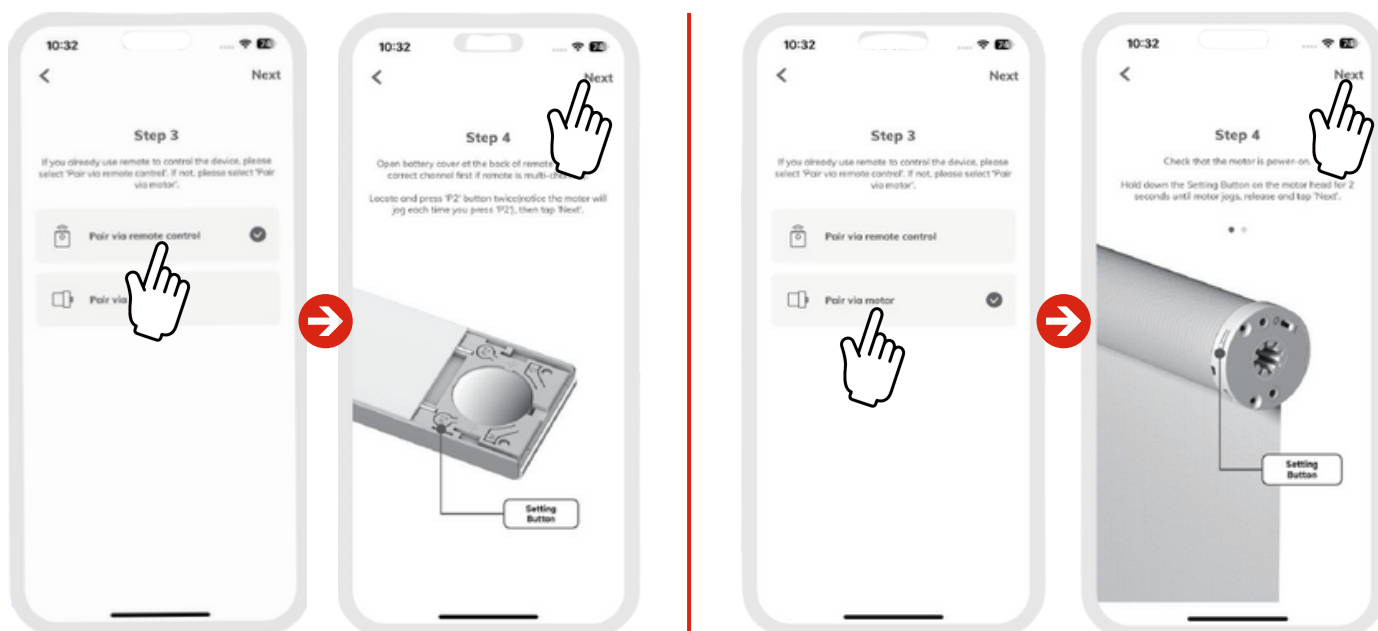


Only on iOS

3. CONNECT A NEW MOTOR



SELECTING THE PAIRING METHOD



Pair via remote control

Pair via engine button

Information:

- If your remote, or a specific channel on it, is paired with only one device, it is recommended to use the remote pairing method to activate device pairing.
- If your remote, or a specific channel on it, is paired with multiple devices, it is recommended to use the motor pairing method to activate device pairing.
- If your device is not paired with a remote control, it is recommended to use the motor pairing method to activate device pairing.
- If your device isn't paired with a remote and doesn't have a setup button, you can activate pairing by turning the device off and then back on. Typically, the device will enter pairing mode within 10 seconds of turning it on.

Procedure:

1. Press the “+” button at the top right of the screen.
2. Select “New Radio Device” from the menu
3. Select the type of use you will give to the new engine.
4. Select the Kumo Matter from the menu (If you have multiple devices, select the one you want to configure).
5. Select the type of pairing you want (via remote or via motor)
6. Follow the on-screen instructions until setup is complete.

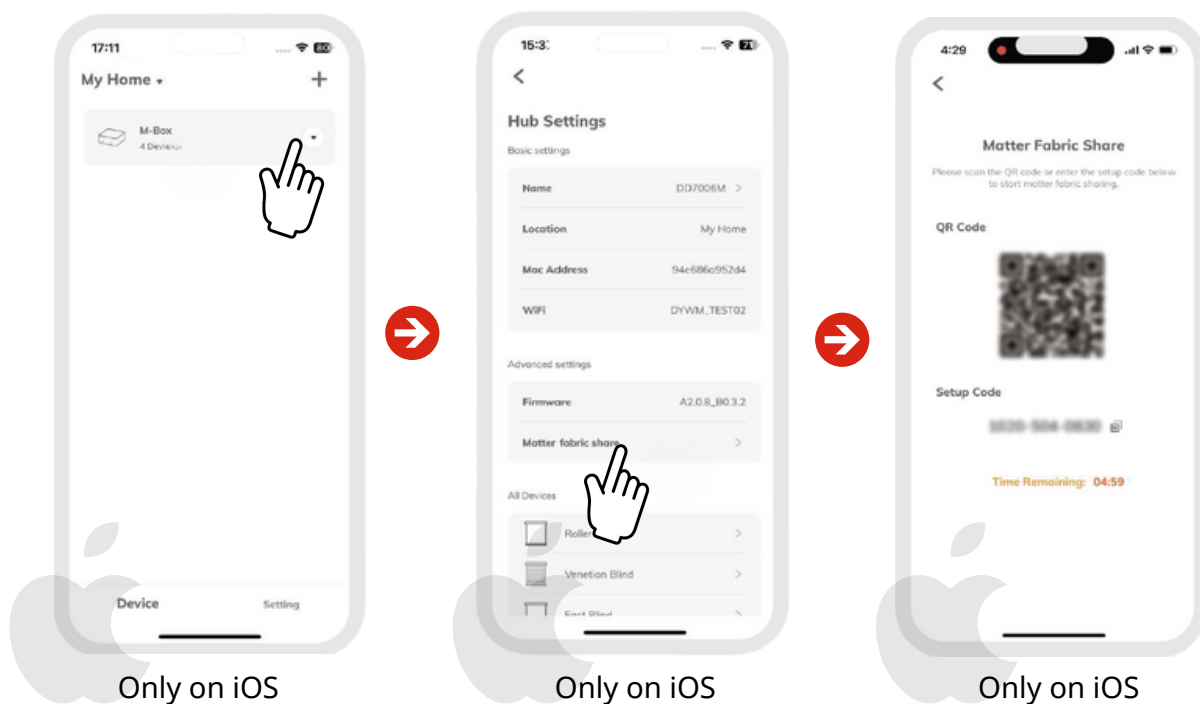
CONNECT KUMO MATTER WITH APPLE HOME

Prerequisites:

1. The HomePod mini and Kumo Matter are connected to the same Wi-Fi network.
2. Both HomePod mini and Kumo Matter are powered on.
3. Verify that the IPv6 network is enabled.
4. Only iPhone/iPad paired with Kumo Matter can use this feature.

The following manual was created with iPhone 15 Pro (iOS version: 17.5), HomePod mini (version: 17.4) and Kumo Matter (version: A2.0.5_B0.3.2).

1. CREATE A QR CODE TO CONNECT



Procedure:

1. When you activate Matter Fabric sharing mode, the Kumo Matter LED will flash purple continuously. This pairing mode will remain active for 5 minutes.
2. During this process, do not tap the back arrow on the "Share Matter Fabric" screen, as this will cancel pairing mode on Kumo Matter.

Both the QR code and the setup code can be used to pair Kumo Matter with Apple Home.

2. PAIR KUMO MATTER WITH APPLE HOME



Procedure:

1. Open the Home app on your iPhone or iPad and tap the "+" button in the top right corner.
2. Selecciona "Add or Scan Accessory."
3. Selecciona "More options..."
4. Select the Kumo Matter from the list of "NEARBY" devices or tap "My accessory isn't shown here" if it doesn't appear.



Procedure:

1. Start pairing and wait.
2. Choose a room
3. Rename Kumo Matter
4. Matchmaking is complete

Information:

- After pairing, the shades connected to Kumo Matter will automatically sync with Apple Home. For example, if Kumo Matter was already connected to four shades before pairing with Apple Home, Apple Home will automatically sync and display them.
- All shades can be renamed from the Apple Home app. By default, shades in Apple Home are named "Matter Accessory, X," where "X" is a numeric value (e.g., "Matter Accessory, 1," "Matter Accessory 2").
- After adding or removing shades in the Shadetool app, your changes will automatically sync to the Apple Home app.

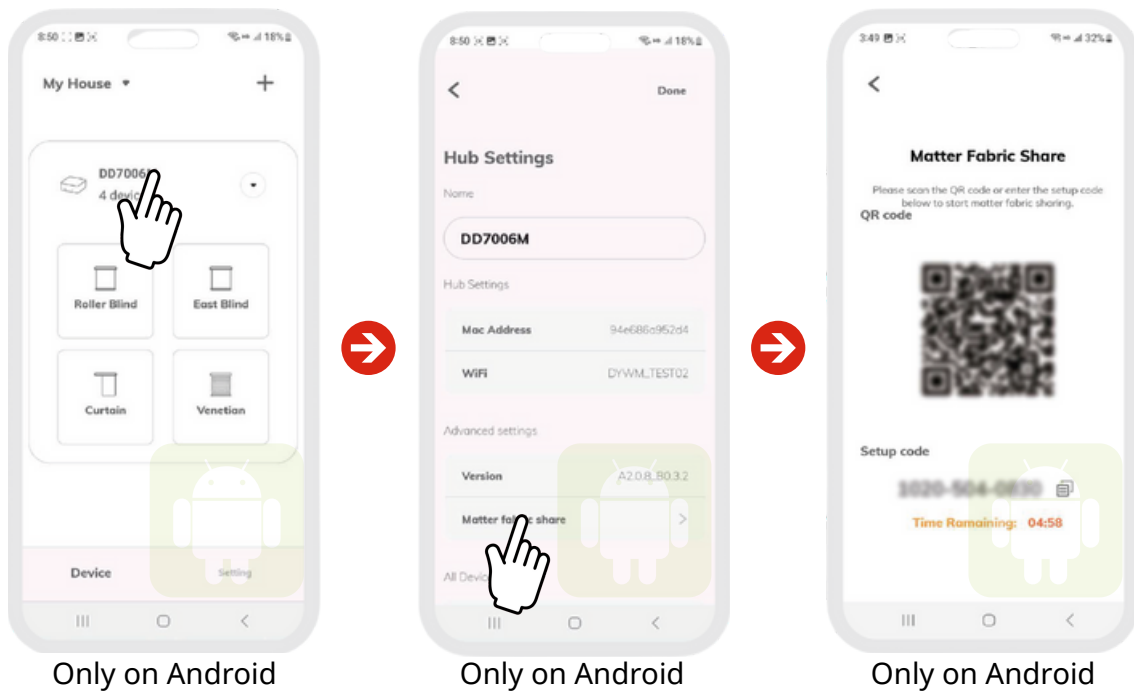
CONNECT KUMO MATTER WITH GOOGLE HOME

Prerequisites:

1. The Google Nest Hub and Kumo Matter are connected to the same Wi-Fi network.
2. Both the Google Nest Hub and Kumo Matter are on.
3. Verify that the IPv6 network is enabled.
4. Only the smartphone paired with Kumo Matter can use this feature.

The following manual was created using Samsung S23 (Android version 13), Google Nest Hub (2nd generation) (version 16.20231130.3.59), Google Home app (version 3.15.1.4), and Kumo Matter (version A2.0.7_B0.3.2).

1. CREATE A QR CODE TO CONNECT

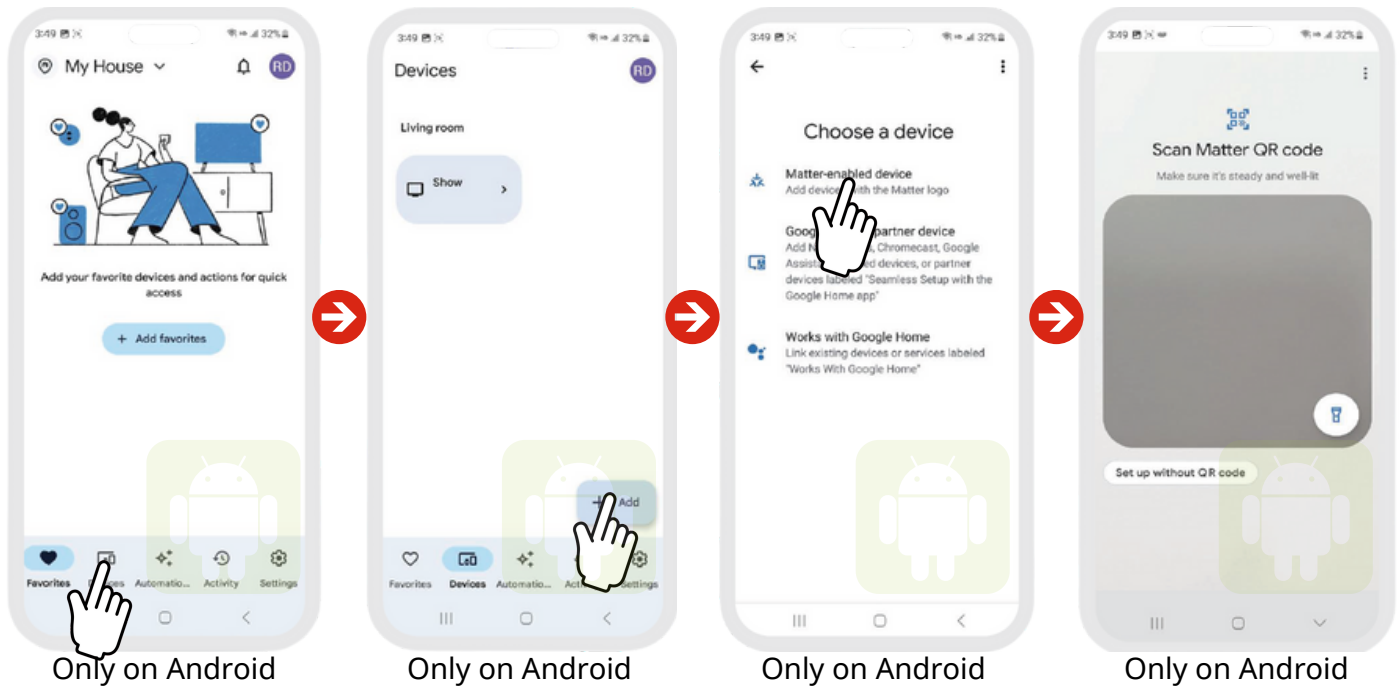


Procedure:

1. When you activate Matter Fabric sharing mode, the Kumo Matter LED will flash purple continuously. This pairing mode will remain active for 5 minutes.
2. During this process, do not tap the back arrow on the "Share Matter Fabric" screen, as this will cancel pairing mode on Kumo Matter.

Both the QR code and the setup code can be used to pair with Google Home.

2. PAIR KUMO MATTER WITH GOOGLE HOME



Procedure:

1. Open the Google Home app on your Android phone or iPhone.
2. Navigate to the 'Devices' page in the bottom bar and select the '+ Add' button in the bottom right corner.
3. Select 'Matter-enabled device'.
4. You can select 'Scan Matter QR Code' to scan the QR code you obtained from the 'Matter fabric share' section in the Shadetool app, or you can choose 'Set up without QR code' to insert the code if you copied it to the settings in step 1.
5. Then accept the terms of use and follow the connection process.

Information:

- After pairing, the blinds connected to Kumo Matter will automatically sync with Google Home. For example, if Kumo Matter was already connected to four blinds before pairing with Google Home, Google Home will automatically sync and display them.
- You can rename all your blinds from the Google Home app.
- After adding or removing shades from the Shadetool app, your changes will automatically sync to the Google Home app.

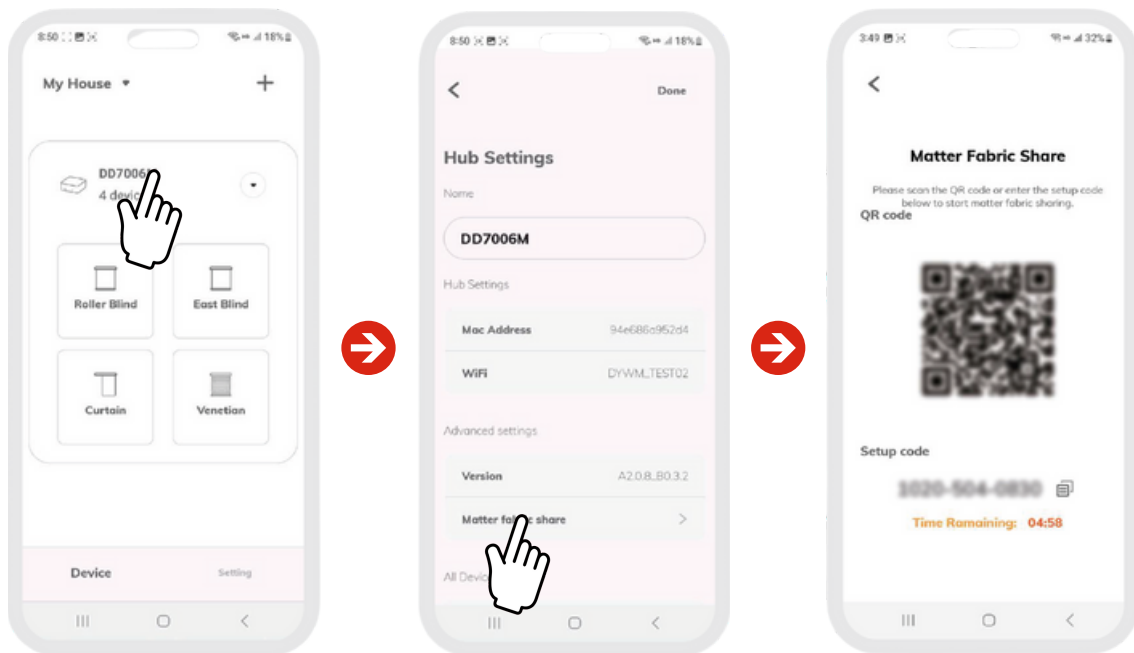
CONNECT KUMO MATTER WITH ALEXA

Prerequisites:

1. The Echo Dot and Kumo Matter are connected to the same Wi-Fi network.
2. Both the Amazon Echo Dot and Kumo Matter are turned on.
3. Verify that the IPv6 network is enabled.
4. Only the smartphone paired with Kumo Matter can use this feature.

The following manual was created with Samsung S23 (Android version 13), Echo Dot (5th generation) (version 10101205124), Amazon Alexa (version 2024.8) and M-Box (version A2.0.7_B0.3.2).

1. CREATE A QR CODE TO CONNECT

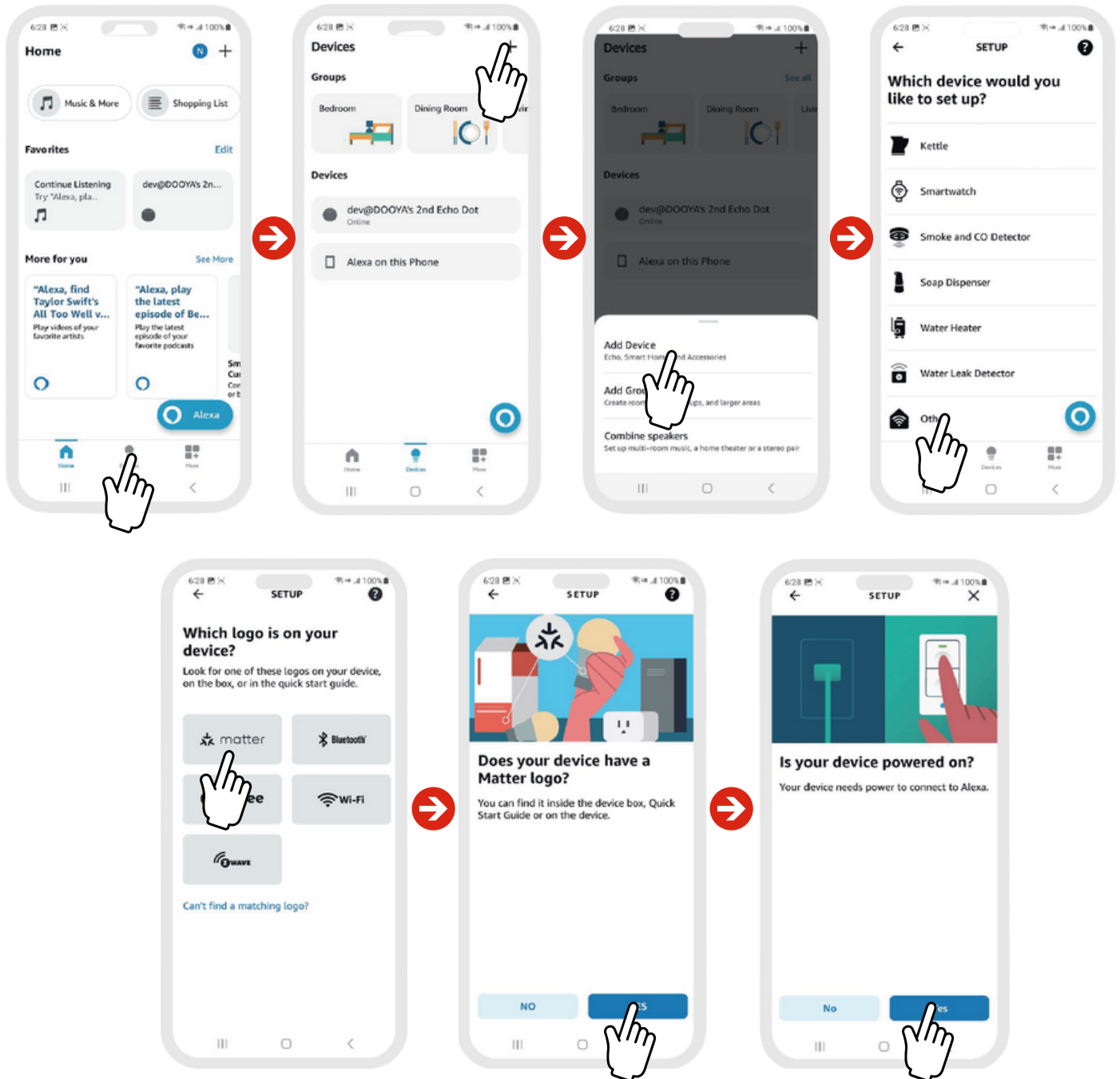


Procedure:

1. When you activate Matter Fabric Sharing mode, the Kumo Matter LED will flash purple continuously. This pairing mode will remain active for 5 minutes.
2. During this process, do not tap the back arrow on the "Share Matter Fabric" screen, as this will cancel pairing mode on Kumo Matter.

Both the QR code and the setup code can be used to pair with Alexa.

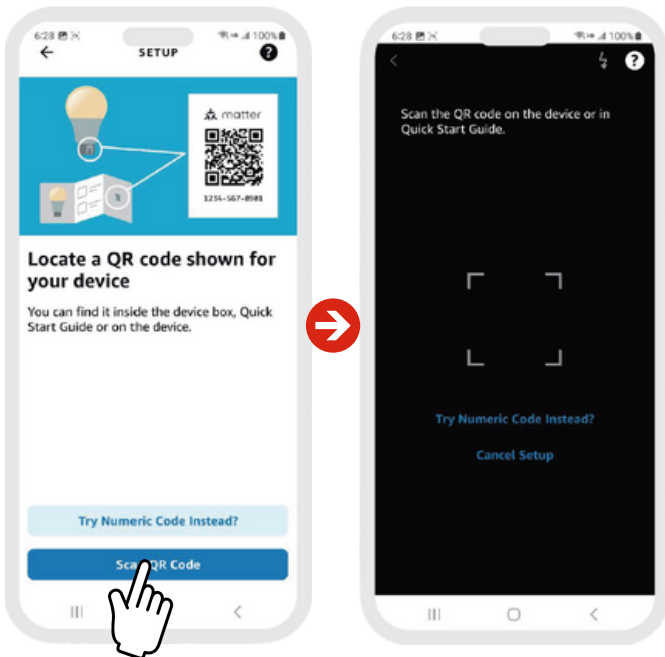
2. PAIR KUMO MATTER WITH ALEXA



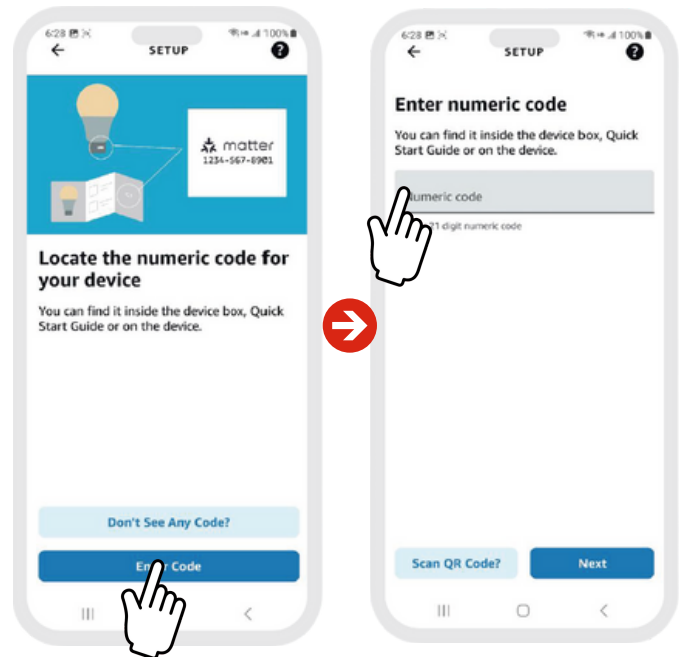
Procedure:

1. Open the Amazon Alexa app on your Android phone or iPhone.
2. Navigate to the 'Devices' page in the bottom bar and select the '+' button in the top right corner.
3. Select "Add Device" in the pop-up box.
4. On the 'SETTINGS' page, scroll to the bottom and select 'Other'.
5. On the "What logo does your device have?" page, select "Matter." Select "Yes" on the "Does your device have the Matter logo?" and "Is it powered on?" pages.

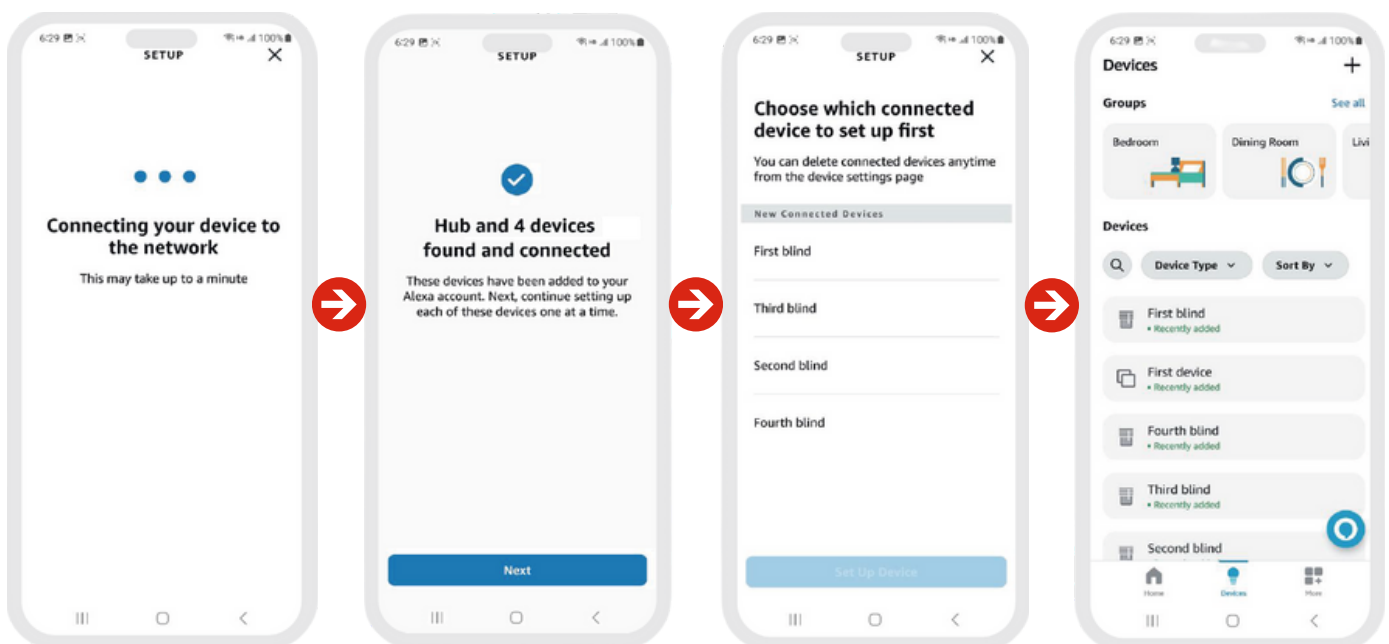
3. CONTINUE PAIRING WITH ALEXA



Pair via remote control



Pair via engine button



3. CONTINUE PAIRING WITH ALEXA

Procedure:

1. You can select 'Scan Matter QR Code' to scan the QR code you obtained from the 'Matter fabric share' section in the Shadetool app, or you can choose 'Set up without QR code' to insert the code if you copied it to the settings in step 1.
2. Follow the on-screen instructions to complete the setup.

Information:

- You can change the name of all your blinds from the Amazon Alexa app.
- After adding or removing shades from the Shadetool app, your changes will automatically sync to the Amazon Alexa app.



www.eurotronic-europe.com

C/Pica d'Estats, 108-118 Poligono Industrial Sant Isidre
08272 Sant Fruitós de Bages (Barcelona) SPAIN

pedidos@eurotronic-europe.com
Tel: +34 932 420 108